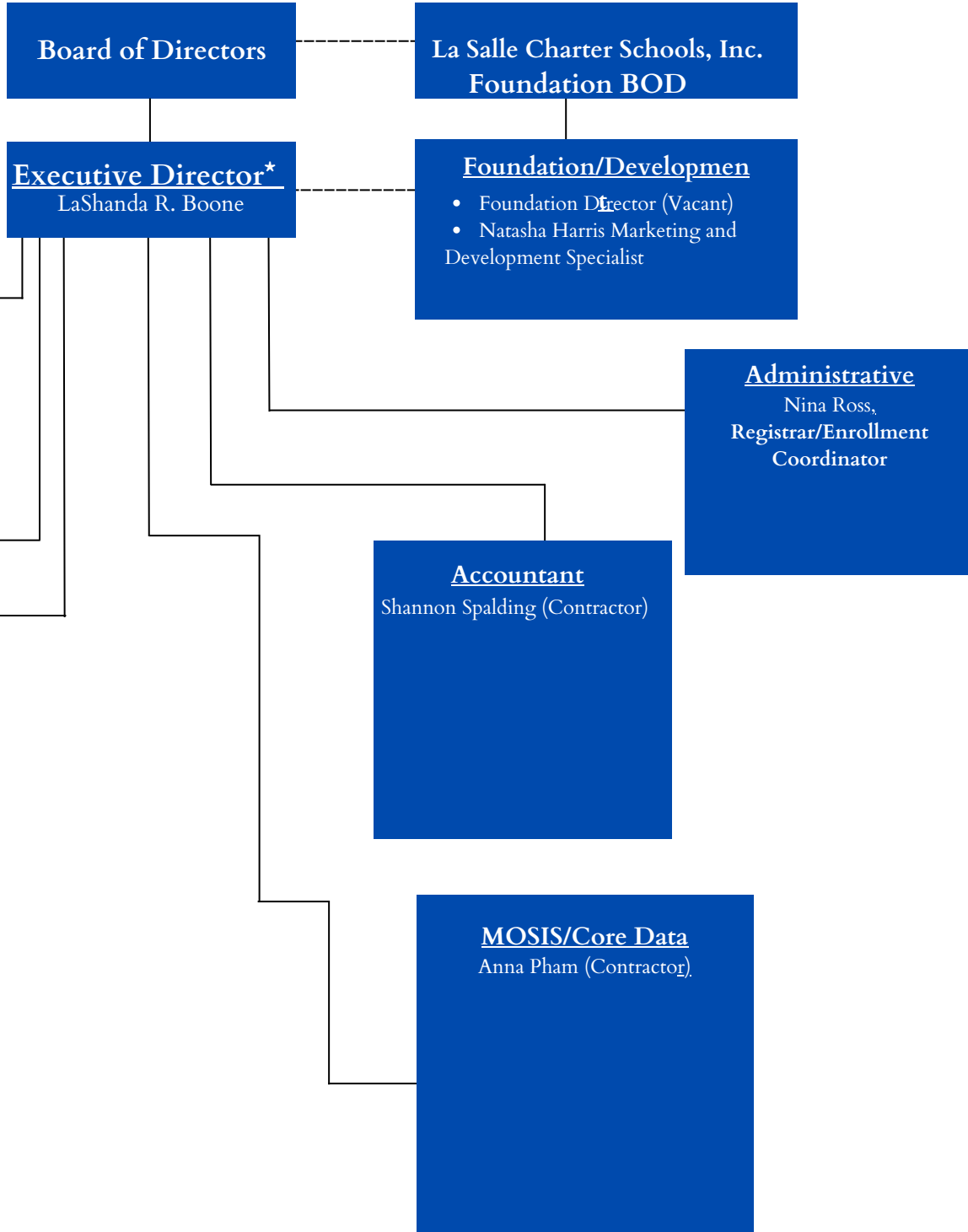




La Salle

2022-2023 Organizationl Chart

DRAFT



Board of Directors

La Salle Charter Schools, Inc.
Foundation BOD

Executive Director*
LaShanda R. Boone

Foundation/Developmen

- Foundation Director (Vacant)
- Natasha Harris Marketing and Development Specialist

Administrative
Nina Ross,
Registrar/Enrollment
Coordinator

Accountant

Shannon Spalding (Contractor)

Graduate Support

Jasmine Clay, Director of
Graduate Support*

MOSIS/Core Data

Anna Pham (Contractor)

School Staff

Lauren Cobb, Principal/ELL
Coordinator*

- 9 Teachers
- 1 Math Interventionist
- 1 Reading Interventionist
- Asst. Principal
- SIS Coordinator (Contractor)
- Counselor/ Homeless & Foster Care Liaison
- SPED Coordinator
- Director of Enrichment/ External Programs

Operations

Mike Hall, Director of
Operations*

- Office Manager
- Volunteers
- Maintenance/ Custodial Staff (Building Stars)
- Food Service Staff (Food Service Consultants)

*Senior Management